

In order to use generic BSQ imagery in Research Systems' ENVI 3.x, follow the steps below:

1. **Start ENVI.** In MS Windows this will generally be through either a desktop icon or an entry under the "Start -> Program Files" section of the Windows menu.
2. **Import the File.** ENVI is able to input all raster data sets. Select "File -> Open Image File" and navigate to the correct location for the BSQ file. Double click it. The "Header Info" dialogue displays (Figure 1). Input the "Samples" and "Lines" (corresponding to the .glcf file's "Pixels_Per_Line" and "Number_Of_Lines", respectively). Set the "Bands" to 1. Set "File Type" to ENVI Classification. The "Classification Info" dialogue displays. Set the number of bands to 14. Click "OK" and "OK". The classified band displays in the "Available Bands List".

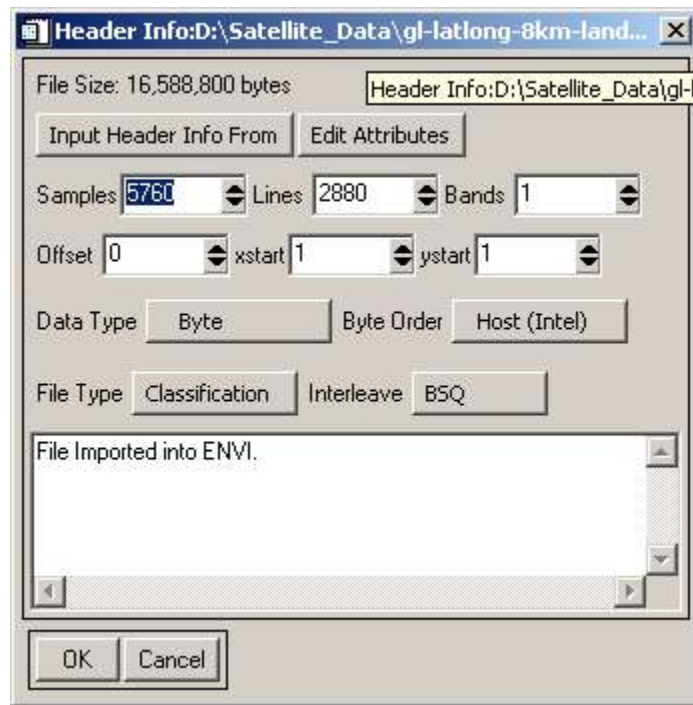


Figure 1: ENVI Header Info Dialogue

3. **To Display the File:** Highlight the band in question and click "Load Band". The image now displays in the ENVI display environment.

A Note on Spatial Reference Data in ENVI: to input more robust aspects of the BSQ classification, select "File -> Edit ENVI Header", select the appropriate file and click "Edit Attributes" in the "Header Info" dialogue. This will allow you to input additional information including georeferencing and pixel size.